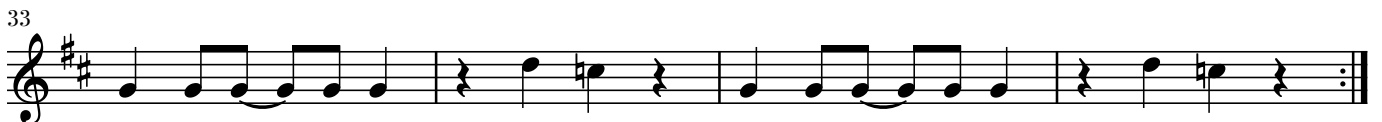
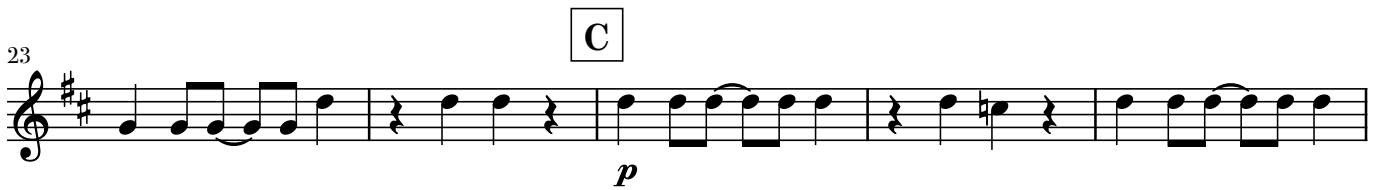
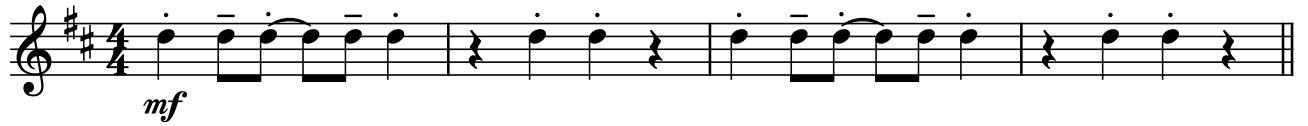


Part 4 in Eb

Mega Musik Wält

Musik: David McVeigh
Text: Michael Zeier-Rast

Animato ♩ = 132



37 **E**

mp

Musical staff 37-41 in treble clef with a key signature of two sharps (F# and C#). The staff contains a sequence of eighth and quarter notes with rests. A dynamic marking of *mp* is placed below the first few notes.

42 **F**

f

Musical staff 42-47 in treble clef with a key signature of two sharps. It features a repeat sign at the end of the staff. A crescendo hairpin is drawn below the staff, starting from measure 42 and ending at measure 47 with a dynamic marking of *f*. An accent (>) is placed above the final note of the first ending.

48

Musical staff 48-51 in treble clef with a key signature of two sharps, continuing the melodic line with eighth and quarter notes.

52 **G**

Musical staff 52-56 in treble clef with a key signature of two sharps, continuing the melodic line.

57

Musical staff 57-60 in treble clef with a key signature of two sharps, continuing the melodic line.

61

Musical staff 61-64 in treble clef with a key signature of two sharps, continuing the melodic line.

65 **H**

Musical staff 65-68 in treble clef with a key signature of two sharps. It features a repeat sign at the end of the staff. A double bar line is drawn below the staff.

69

Musical staff 69-70 in treble clef with a key signature of two sharps, ending with a double bar line. A double bar line is drawn below the staff.